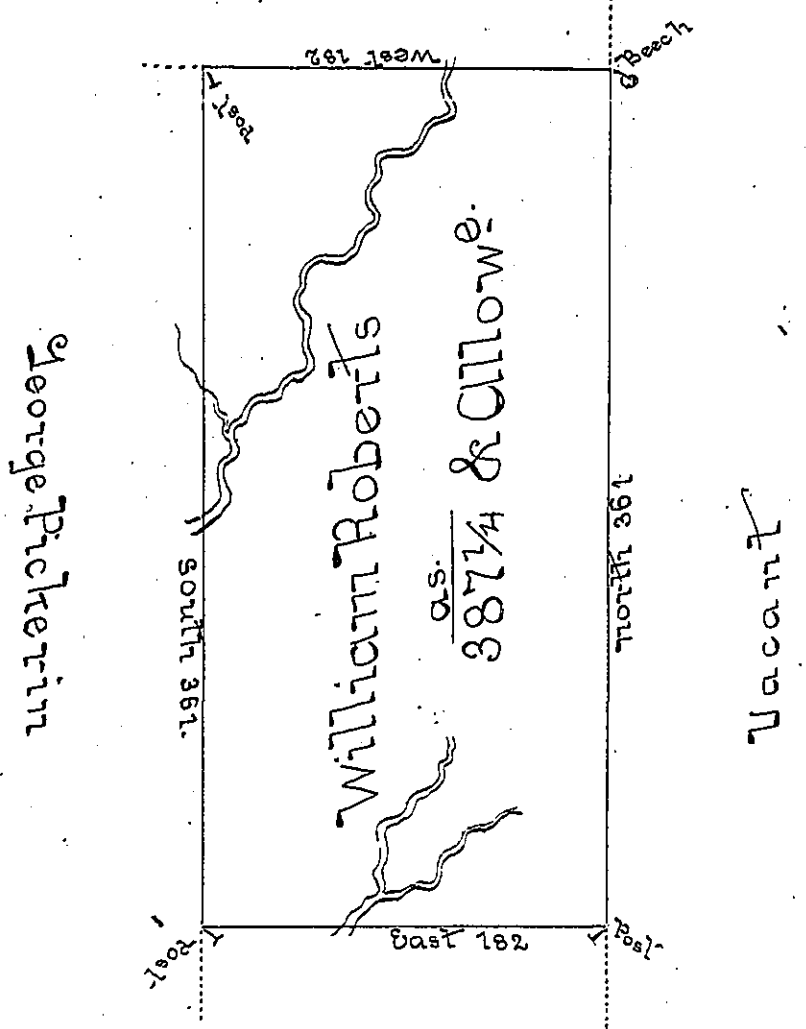


of the County



Obadiah Wilby

A Draught of a tract of land Called _____ Situate on the obl.
 Wyolusing Creek Joining Land Surv^d for Geo. Pickering and
 of the (obl.) Northum^d. County Containing three Hundred &
 Eighty Seven (obl.) and Allowe. of Six P. Cent for Roads &c.
 Surv^d for William (obl.) (obl.) 15th Day of Nov. 1784 in pursuance
 of a warrant (obl.) 16th Day of July 1784.

John Buzorn Esq^r }
 Surv^r Gen^l.

by Wm. Gray obl.
 W.M. Fc.

now Buzorn

IN TESTIMONY that the above is a copy of the original remaining on file in the
 Department of Internal Affairs of Pennsylvania, made con-
 formably to an Act of Assembly approved the 16th day of
 February, 1833, I have hereunto set my Hand and caused
 the Seal of said Department to be affixed at Harrisburg, this
 first day of October 1896

James W. Latta
 Secretary of Internal Affairs.